A photograph of Audubon Elementary School. The school is a single-story building with a white facade and red brick accents. It is partially obscured by several large trees, including a prominent evergreen on the left and a large deciduous tree with bare branches in the center. A paved road with yellow double lines runs across the foreground. The sky is overcast and grey.

# Audubon Elementary School Summary November 15, 2022

# Recommendation

- Authorize the Superintendent to take actions to level the Audubon Elementary School building and to direct the Superintendent to provide a recommendation by July 31, 2023 to the Board of School Directors on the future educational use of the property inclusive of needs, benefits, costs, and timelines.

# Summary

- Original Building consisting of 4 classrooms constructed in 1928
- Operated as a school seeing several renovations/additions in 1950, 1955, 1960, 1979 and 1995
- Closed in the late 1980 and used by the Lower Providence Township Library
- Opened as a school in 1995
- Closed in 2017
- 2019/2020 held discussions with Lower Providence Township on potential use of part of property/building for community center
- Pandemic placed discussions among district/township on hold
- June 2022 revisited district/township discussions with no substantial commitment to proceed forward with community center or use of building
- August 2022 Superintendent presented pathway forward to (sell or keep) property while targeting the elimination of annual \$200k upkeep and maintenance expense of building
- October 2022 Superintendent presented potential option for educational use and recommending that the Board level building, keep property and allow administration to provide future recommendations for educational use of property
- October 27, 2022 through November 15, 2022 – public notice on Nov 22, 2022 vote to raise building
- November 15, 2022 – presentation update on Audubon property to Board at Work Session
- November 22, 2022 – Board of School Directors to vote on future of property/building

# Audubon Elementary School Property

**Located:** Egypt Road in  
Lower Providence  
Township

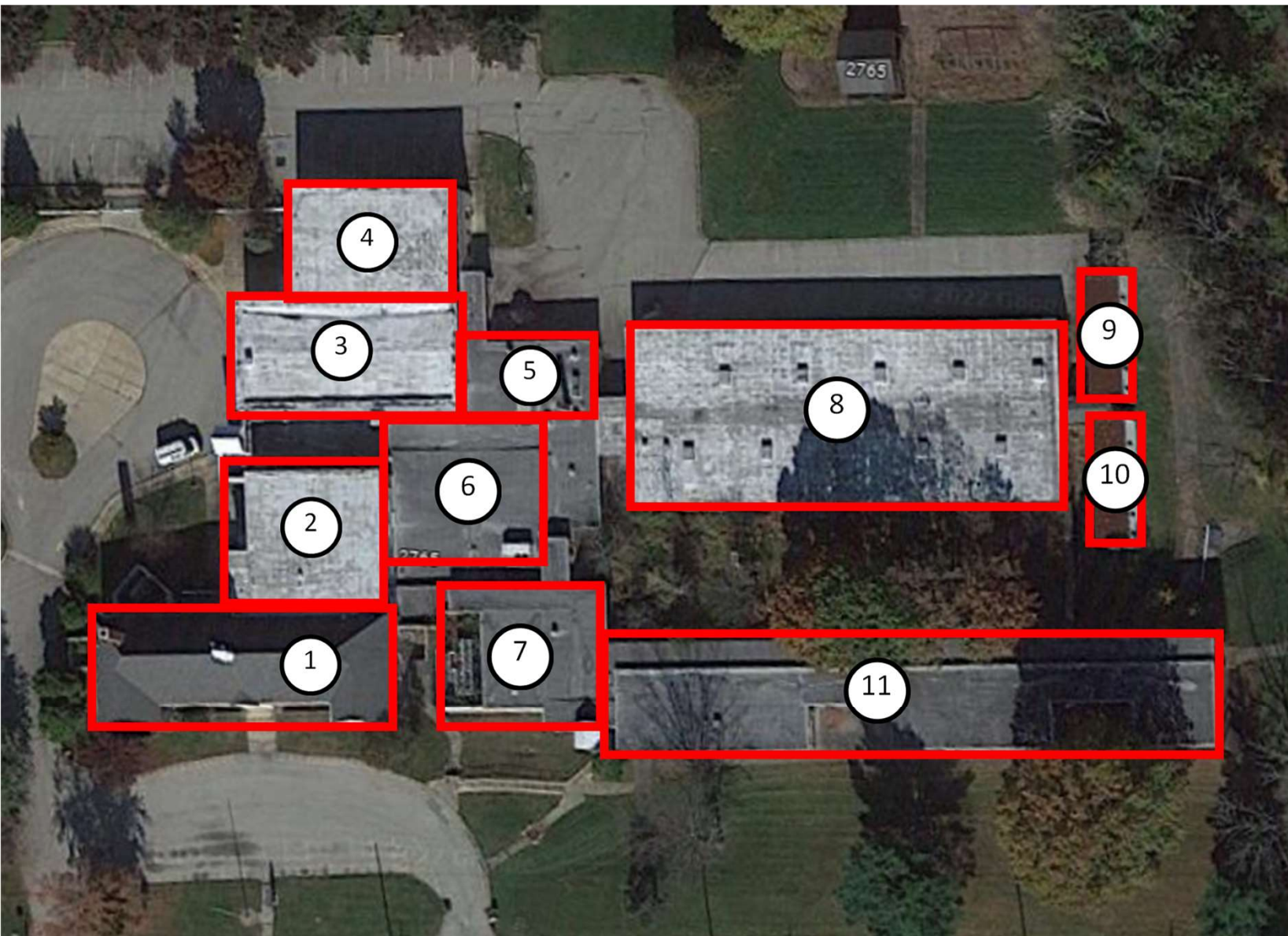
**Land Size** 14.043 acres

**Building Size** 55,333 sq ft

**Zoning** R-2/IO - Residential  
with Institutional Overlay  
District







#### LEGEND

- 1 – Original Building
- 2 – Office/Mechanicals
- 3 – Gymnasium
- 4 – Auditorium/Cafeteria
- 5 – Kitchen
- 6 – Library
- 7 – Administrative Offices
- 8 – 10 Classrooms
- 9 – Modular Classroom
- 10 – Modular Classroom
- 11 – 5 Classrooms

**Recommended to level  
entire building by end  
of summer 2023**







Proposed Park  
August 10, 2022





Potential Arcola/Skyview All Purpose Field with  
6 lane track + Community access

October 18, 2022



# Estimated Summary Costs of Actions

Abatement = \$120,000

Demolition/Removal = \$368,000

Misc. = \$50,000

Total = \$538,000

# Recommendation

- Authorize the Superintendent to take actions to level the Audubon Elementary School building and to direct the Superintendent to provide a recommendation by July 31, 2023 to the Board of School Directors on the future educational use of the property inclusive of needs, benefits, costs, and timelines.